

Intelligent Drift

The Expro Intelligent Drift (I-Drift) was designed to meet the requirement to provide accurate Hold-Up Depth (HUD) measurement without the requirement for an on-site specialist or a surface depth system. By incorporating a number of extra sensors, the assembly can also be used for well profiling, fluid contact identification and scale deposition monitoring.

The I-Drift includes Gamma Ray (GR) and Casing Collar Locator (CCL) sensors for correlation purposes, as well as pressure and temperature sensors for well profiling.

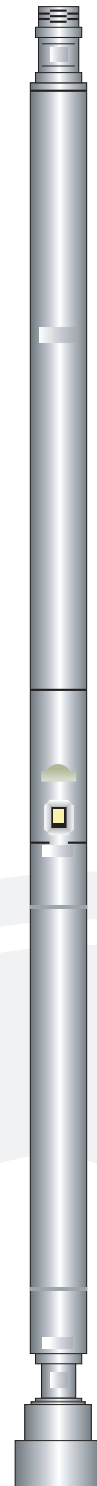
A simple interface allows Wireline personnel to program and recover data. This is then sent back to base for fast analysis using an office-based software package, which uses depth stretch/compress algorithms to correlate the time-based tool file to the reference well log.

Applications:

- Hold-up depth determination
- Temperature/pressure well profiling
- Radioactive scale deposition monitoring
- Fluid contact identification
- Leak Detection

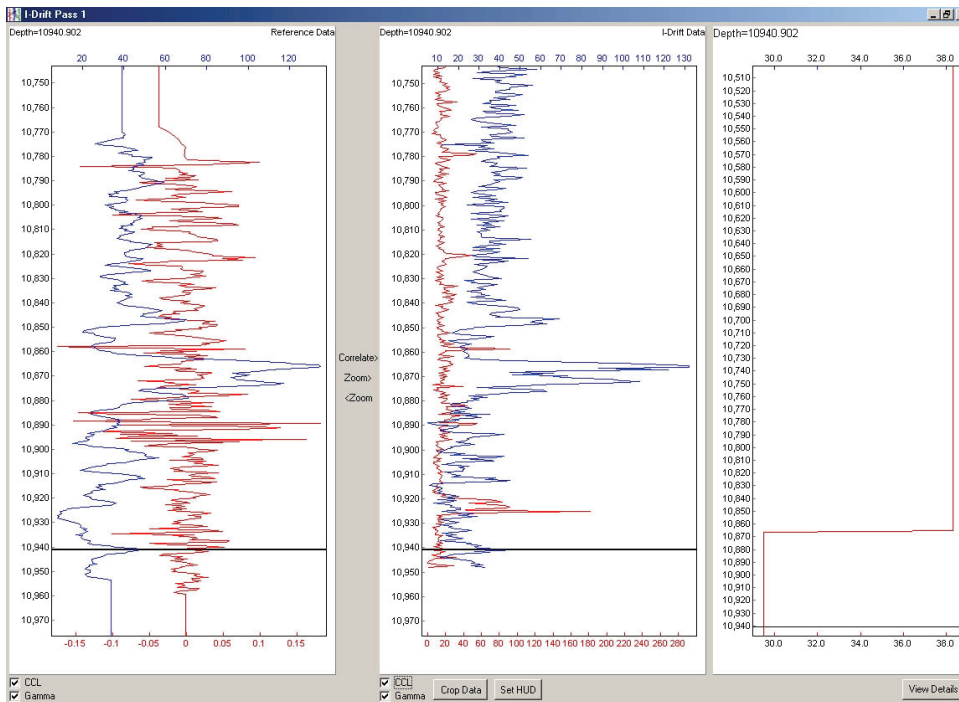
Benefits:

- Run-it-yourself set-up c/w simple operations software
- Quartz crystal sensors for data accuracy and resolution
- Non-volatile memory



Intelligent Drift

Technical Specification:	
External Diameter	1 ¹¹ / ₁₆ " (43mm)
Length	6.96ft (2.12m)
Temperature Rating	177°C (350°F)
Pressure Rating	15,000psi (103MPa)
Memory Capacity	1.5 million data sets
Temperature Sensor	Platinum Resistance Thermometer Accuracy: +/- 0.5°C Resolution: 0.09°C Response Time: 0.5 sec
Pressure Sensor	Shear Quartz Crystal Accuracy: +/- 3.2 psi Resolution: 0.003 psi
Gamma Ray	Scintillation
CCL	Passive
Optional Sensors	Spinner X-Y Caliper



Gamma Ray CCL Correlation using I-Drift software